

# Sheraton Suites Cypress Creek

555 N.W. 62nd Street . Fort Lauderdale . Florida 33309 . USA . Phone: (954) 772-5400



## Indulge and Energize

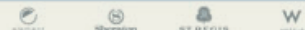


[ABOUT] Sheraton Starwood Preferred Planner Starwood Meetings Meetings in a Moment

[Terms & Conditions](#)

starwood  
Hotels and  
Resorts

MERIDIAN | Sofi | THE LUXURY COLLECTION | WESTIN | FOUR POINTS



# Sheraton Suites Cypress Creek

555 N.W. 62nd Street . Fort Lauderdale . Florida 33309 . USA . Phone: (954) 772-5400



## Breakfast Table

## Enhancements

Breakfast table includes the following:  
 Your choice of two juices: apple, orange, grapefruit or cranberry  
 Assortment of preserves, marmalade and sweet butter  
 Freshly brewed Starbucks® regular and decaffeinated coffee, specialty TAZO® tea served with sugar three ways, milk and cream

### Atrium breakfast

Display of sliced tropical fruits  
 Fresh buttery croissants, sliced banana, bran, and chocolate breakfast breads, fruit danish  
 Scrambled eggs with cheddar cheese and chives  
 Banana stuffed French toast with warm maple syrup  
 Smoked apple wood bacon and sausage links  
 Home fried potatoes with onions and peppers 19.50

### Deluxe cypress continental

Display of sliced tropical fruits  
 Selection of pastries to include:  
 Flakey croissants, double chocolate chip bread, banana nut bread, fruit danish, and assorted freshly baked muffins 16.95

### Cypress continental

Display of sliced tropical fruit  
 Fresh buttery croissants  
 Rustic scones  
 Assorted freshly baked muffins 14.95

### Omelet station\*

With diced Ham and bacon, onions, tomatoes, Mushrooms, peppers, grated cheddar and pepper jack cheese 8.5

### Waffle station\*

Freshly made waffles with apple compote, strawberry compote, caramel bananas, whipped cream, and maple syrup 6.50

Smoked salmon display with capers, chopped egg, diced tomato, diced red onion, and fresh bagels 9.50

Scrambled egg and bacon quesadilla with cheddar cheese, salsa, and sour cream 6

Irish cut oatmeal with green apple, sun-dried raisin compote 5

Pancakes with warm maple syrup 5

Bagels with cream cheese 4.25

Fresh whole fruit 3

Sticky buns with pecans 2.50

Assorted cold cereals 3

Assorted yoplait® yogurts 4

Granola mix with dried fruits 4

Yogurt and granola fruit parfaits 4.95

Assorted coca cola® soft drinks 3.95

\*Requires a labor fee of 175 A surcharge of 5 per person will apply to all tables that are served with less than 25 people. Attendance figures for enhancements must equal the guaranteed attendance figure All tables are served for a maximum of 1 1/2 hours. All pricing is per person unless otherwise noted. A 22% service charge of the total food and beverage revenue (plus all applicable taxes, currently 6%) will be added.

# Sheraton Suites Cypress Creek

555 N.W. 62nd Street . Fort Lauderdale . Florida 33309 . USA . Phone: (954) 772-5400



## Plated Breakfast

## Enhancements

All plated breakfast include:

A plated display of sliced tropical fruit, a basket of freshly baked croissants, juice selection, freshly brewed Starbucks® regular and decaffeinated coffee, and specialty TAZO® teas, served with sugar three ways, milk and cream

Assortment of preserved, marmalade and sweet butter

### Fluffy scrambled eggs

With cheddar cheese and chives, apple wood bacon, home fried potatoes with onion and peppers, grilled tomatoes 22

### Eggs Benedict

English muffin layered with Canadian bacon, poached eggs, topped with hollandaise, home fried potatoes with onions and peppers 26

### Cinnamon French toast

Cinnamon raisin French toast, warm maple syrup, whipped sweet butter and smoked bacon 23

Yogurt and granola fruit parfaits 4.95

Sausage links 3

Granola mix with dried fruits 4

Assorted Yoplait® yogurts 3

Fresh whole fruit 2.25

Bottled spring water 3

Bottled mineral water 4

Assorted coca cola® soft drinks 3.95

Attendance figures for enhancements must equal the guaranteed attendance figure All pricing is per person unless otherwise noted. A 22% service charge of the total food and beverage revenue (plus all applicable taxes, currently 6%) will be added.

# Sheraton Suites Cypress Creek

555 N.W. 62nd Street . Fort Lauderdale . Florida 33309 . USA . Phone: (954) 772-5400



## Brunch

Brunch table includes:

Your choice of two juices: apple, orange, cranberry, or grapefruit

Assortment of preserves, marmalades and sweet butter

Freshly brewed Starbucks® regular and decaffeinated coffee, specialty TAZO® teas, served with sugar three ways, milk and cream

### Grand cypress brunch

Selection of pastries to include:

Breakfast breads, fruit danish, flakey croissants, and assorted breakfast muffins

Fresh sliced tropical fruits

Fresh mozzarella and sliced tomatoes with olive oil, chiffonade of basil, and balsamic reduction

Smoked salmon display with capers, chopped onion, sprouts, tomatoes, chopped egg, bagels and cream cheese

Traditional eggs Benedict

Farm fresh scrambled eggs

Smoked applewood bacon and sausage links

Parmesan crusted chicken breast with garlic wilted spinach, smoked tomato coulis

Roasted salmon with creamy horseradish lentils

Polenta cakes with roasted corn, jalapeños, and cheddar cheese 31

## Enhancements

### Omelet station\*

With diced ham and bacon, onions, tomatoes, mushrooms, peppers, grated cheddar and pepper jack cheese 8.50

### Waffle station\*

Freshly made waffles with apple compote, strawberry compote, caramel bananas, whipped cream, and maple syrup 6

Pancakes with warm maple syrup 5

Yogurt and granola fruit parfaits 4.95

Irish cut oatmeal with green apple, sun-dried raisin compote 5

Granola mix with dried fruits 4

Assorted Yoplait® yogurts 4

Assorted cold cereals 3

Fresh whole fruit 2.25

Bottled mineral water 4

Bottled spring water 3

Assorted coca cola® soft drinks 3.95

\*Requires a labor fee of 175 A surcharge of 5 per person will apply to all tables that are served with less than 25 people. Attendance figures for enhancements must equal the guaranteed attendance figure All tables are served for a maximum of 1 1/2 hours. All pricing is per person unless otherwise noted. A 22% service charge of the total food and beverage revenue (plus all applicable taxes, currently 6%) will be added.

# Sheraton Suites Cypress Creek

555 N.W. 62nd Street . Fort Lauderdale . Florida 33309 . USA . Phone: (954) 772-5400



## All Day Breaks

Includes freshly brewed Starbucks® regular and decaffeinated coffee, specialty TAZO® teas, served with sugar three ways, milk and cream

### South beach twist

Display of fresh tropical fruit kabobs with yogurt sauce, tropical fruit smoothies, assortment of frozen yogurt bars, key lime tarts 12.95

### Welcome to the movies

Popped flavored popcorn, assortment of hershey mini candy bars, roasted mixed nuts, tortilla chips with pico de gallo. 11.95

### Mom's cookie jar

Fresh baked cookies consisting of: macadamia, chocolate chip, oatmeal raisin and peanut butter; assorted wrapped candy bars, ice cold whole and low fat milk, assorted soft drinks 12.95

### Latin fusion

a display of authentic Latin American favorites including beef empanadas, tequenos, tostones all served with fresh pico de gallo and an array of fresh juices. 12.95

## Enhancements

Freshly brewed Starbucks® regular or decaffeinated coffee ~ per gallon 55

Selection of specialty TAZO® teas ~ per gallon 55

Individual bag of miss vickie's chips® to include bbq, jalapeno and sea-salted 4.25

Warm pretzels with tangy mustard 3.50

Assorted cookies ~ per doz 32

Fresh whole fruit 3

Freshly baked muffins ~ per doz 36

Assorted breakfast danish ~ per doz 36

Hot chocolate ~ per package 3.75

Assorted coca cola® soft drinks 3.95

Bottled mineral water 4

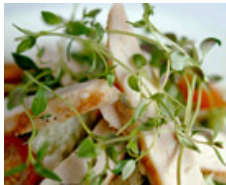
Bottled spring® water 3

Chilled Red Bull® 5.25

A surcharge of 5 per person will apply to all tables that are served with less than 15 people. Attendance figures for enhancements must equal the guaranteed attendance figure All tables are served for a maximum of 1 1/2 hours. All pricing is per person unless otherwise noted. A 22% service charge of the total food and beverage revenue (plus all applicable taxes, currently 6%) will be added.

# Sheraton Suites Cypress Creek

555 N.W. 62nd Street . Fort Lauderdale . Florida 33309 . USA . Phone: (954) 772-5400



## Chilled Lunch Table

## Enhancements

All tables include freshly brewed Starbucks® regular and decaffeinated coffee, specialty TAZO® teas and ice tea

### Corner deli

Chef's soup selection

Romaine lettuce quartered tomatoes, parmesan cheese, croutons and caesar dressing

Three potato salad

Pineapple cole slaw

Black forest ham, smoked turkey, roast beef, genoa salami, swiss, cheddar and american cheese

Marbled rye, foccacia, sourdough, kaiser rolls, croissants and white pullman

Sliced onions, tomatoes, bibb lettuce and pickles

Whole grain and dijon mustard, mayonnaise

Assorted miss vicki's potato chips

Cookies and brownies 32

Freshly brewed Starbucks® regular or decaffeinated coffee ~ per galloon 55

Selection of specialty TAZO® teas ~ per gallon 55

Hot chocolate ~ per package 3.75

Freshly baked muffins ~ per doz 36

Assorted breakfast danish ~ per doz 36

Warm pretzels with tangy mustard 3.50

Individual bag of miss vickie's chips® to include bbq, jalapeno, and sea-salted 4.25

Assorted cookies ~ per doz 32

Fresh whole fruit 3

Assorted coca cola® soft drinks 3.95

Bottled mineral water 4

Vitamin water® 5

Bottled spring® water 3

Chilled red bull® 5.25

A surcharge of 5 per person will apply to all tables that are served with less than 25 people. Attendance figures for enhancements must equal the guaranteed attendance figure All tables are served for a maximum of 1 1/2 hours. All pricing is per person unless otherwise noted. A 22% service charge of the total food and beverage revenue (plus all applicable taxes, currently 6%) will be added.

# Sheraton Suites Cypress Creek

555 N.W. 62nd Street . Fort Lauderdale . Florida 33309 . USA . Phone: (954) 772-5400



## Hot Lunch Table

## Enhancements

All tables include freshly brewed Starbucks® regular and decaffeinated coffee, specialty Tazo® teas and ice tea

### Florida Bar-B-Que

Field greens and iceberg lettuce, cucumbers, tomatoes and choice of two dressings

Country style potato salad

Peach salad and slaw

Guava Bar-B-Que ribs

Creole baked curry chicken

Fresh corn on the cob with cilantro essence

Black beans and rice

Jalapeno corn bread

Strawberry short cake or apple cobbler 36

### Cubano

Caldo gallego soup

Boston bibb with radicchio, citrus segments and hearts of palm

Black bean guacamole with tortilla chips

Arroz con pollo

Chimichurri flank steak with avocado

Grilled tilapia and jalapeno mint compound butter

Grilled vegetables with romesco sauce almondine

Fried plantains

Coconut flan 36

Assorted cookies ~ per doz 32

Fresh whole fruit 3

Assorted Coca-Cola® soft drinks 3.95

Bottled mineral water 4

Bottled Spring® water 3

Vitamin water® 5

Chilled Red Bull® 5.25

A surcharge of 5 per person will apply to all tables that are served with less than 25 people. Attendance figures for enhancements must equal the guaranteed attendance figure. All tables are served for a maximum of 1 1/2 hours. All pricing is per person unless otherwise noted. A 22% service charge of the total food and beverage revenue (plus all applicable taxes, currently 6%) will be added.

# Sheraton Suites Cypress Creek

555 N.W. 62nd Street . Fort Lauderdale . Florida 33309 . USA . Phone: (954) 772-5400



## Italian Luncheon

Minestrone soup

Vine-ripened tomatoes, fresh mozzarella, basil with balsamic vinegar & extra virgin olive oil

Caesar salad with foccacia croutons & shaved parmesan cheese

Pasta salad with peppers and mushrooms

Breast of chicken parmesan with herbs and tomato sauce

Italian sausage, peppers and onions, tossed with penne pasta and spicy marinara

Baked meat lasagna

Seasonal fresh vegetables with lemon butter

Tiramisu 32

A surcharge of 5 per person will apply to all tables that are served with less than 25 people. Attendance figures for enhancements must equal the guaranteed attendance figure All tables are served for a maximum of 1 1/2 hours. All pricing is per person unless otherwise noted. A 22% service charge of the total food and beverage revenue (plus all applicable taxes, currently 6%) will be added.

# Sheraton Suites Cypress Creek

555 N.W. 62nd Street . Fort Lauderdale . Florida 33309 . USA . Phone: (954) 772-5400



## Chilled Plated Lunch

## Enhancements

All Chilled plated lunch include freshly brewed Starbucks® regular and decaffeinated coffee, specialty tazo® teas, and ice tea

### Flame grilled chicken cobb salad

Traditional cobb salad with crispy bacon bits, blue cheese, avocado, fresh tomato, hard boiled egg and topped with a sliced grilled chicken breast. 16

### Duval street chicken caesar salad

Hand tossed with romaine lettuce, shredded parmesan cheese, roma tomato and focaccia croutons. 15

### Turkey club wrap

Crisp romaine lettuce, tomato, shaved parmesan cheese wrapped in a flour tortilla 15

### Grilled chicken sandwich

Provolone, vine ripened tomato, lettuce and red onion on a whole wheat bun 15

Chocolate chip cookie 4

Chocolate brownie 3

Fresh whole fruit 3

Assorted coca cola® soft drinks 3.95

Bottled mineral water 5

Bottled spring® water 4.25

Attendance figures for enhancements must equal the guaranteed attendance figure. All pricing is per person unless otherwise noted. A 22% service charge of the total food and beverage revenue (plus all applicable taxes, currently 6%) will be added.



## Hot Plated Lunch

## Enhancements

Your plated lunch includes:

Freshly brewed Starbucks® coffee, decaf and teas  
Freshly baked rolls and creamery butter

### Center cut top sirloin filet

with gorgonzola compound butter and a heap of freshly roasted garlic mashed potatoes. 32

### Cheese tortellini a la vodka

Three flavored cheese tortellini with grape tomatoes and green peas in a rich vodka sauce with sprinkled with fresh parmesan. 23

### Capellini " Frutti di Mare" Pasta

Shrimp, scallops, and mussels tossed in an oven roasted tomato and garlic sauce 26

### Dijon Chicken with Portobello

Chicken breast brushed with dijon mustard and topped with sautéed portobello and mozzarella cheese served with mashed potatoes and fresh seasonal vegetables 24

### Salads

Caesar salad with hearts of romaine, bacon bits, herbed foccacia crisp 4

Traditional greek salad with fresh peppers, bermuda onions, homemade croutons and creamy anchovy garlic dressing 4

Mixed field greens with tear drop tomato, julienne carrots and roasted beets 3

### Dessert

Individual key lime tart 6

Tiramisu 6

Carrot Cake with cream cheese icing 5

Attendance figures for enhancements must equal the guaranteed attendance figure All pricing is per person unless otherwise noted. A 22% service charge of the total food and beverage revenue (plus all applicable taxes, currently 6%) will be added.

# Sheraton Suites Cypress Creek

555 N.W. 62nd Street . Fort Lauderdale . Florida 33309 . USA . Phone: (954) 772-5400



## Grab And Go

## Enhancements

All box luncheons are served with choice of ice tea or soft drink

### Sandwich - (select one)

Deli style hoagie with ham, roast beef, turkey, provolone cheese, lettuce, tomatoes and bermuda onions 28

Croissant sandwich with smoked turkey, asparagus and swiss cheese 28

Ancho marinated skirt steak in a wheat tortilla wrap, roasted corn and black bean relish 30

Blackened chicken sandwich on calamata olive bread, greek garlic paste and brie cheese 28

### Accompaniments - (select two)

Potato chips  
Pretzels  
Pasta salad

### Dessert - (select one)

Chocolate chip cookies  
Whole fruit  
Chocolate brownie

Tortilla chips 2

Potato salad 2

Cole slaw 2

Dessert

Rice crispy bars 2

Granola bars 2

A surcharge of 5 per person will apply to all tables that are served with less than 25 people. Attendance figures for enhancements must equal the guaranteed attendance figure All pricing is per person unless otherwise noted. A 22% service charge of the total food and beverage revenue (plus all applicable taxes, currently 6%) will be added.



## Reception Table

### Antipasto display

Assortment of grilled and roasted vegetables, prosciutto, capicola, salami, smoked ham, aged cheddar, provolone, gouda marinated olives, pickles, artichokes, focaccia, bread stick, flat bread 16

### Selection of finger sandwiches

Turkey with honey dijon mustard on wheat bread, mozzarella, tomato & basil on flat bread  
roast beef and swiss cheese on marble rye  
chicken salad on white bread 13

### Cypress cheese display

Selection of domestic and import cheeses displayed with fresh fruit garnish served with flat bread and water crackers 12

### Fresh vegetable display

Farm fresh selection of crisp and grilled vegetables, spiced onion and chive dipping sauce or sun-dried tomato and roasted garlic dipping sauce 7

### Fruit display

Display of seasonally sliced fresh fruit with berries, served with yogurt dipping sauce 8

### Chocolate fountain

Display of toppings from strawberries, pineapples, marshmallows, pretzel sticks, rice crispy, cookies, graham crackers, brownie bites, oreo cookies - Selection of five 25

### Miniature dessert display

Miniature pastries, petit fours and chocolate dipped strawberries, assorted tortes, layer cakes and cheesecakes 15

Reception Tables are enhancement items and are not sold as a stand alone menu.

## Enhancements

### Chilled seafood bar

Selection of jumbo shrimp, oysters, littleneck clams and crab claws, served with cocktail sauce fresh dill aioli and lemon butter 18

### Salad Station

Classic caesar salad with shaved parmesan and sourdough croutons. Tossed field greens with a choice of two dressings. Marinated artichoke salad. Citrus fruit salad. 10

A surcharge of 5 per person will apply to all tables that are served with less than 25 people. Attendance figures for enhancements must equal the guaranteed attendance figure All tables are served for a maximum of 1 1/2 hours. All pricing is per person unless otherwise noted. A 22% service charge of the total food and beverage revenue (plus all applicable taxes, currently 6%) will be added.

# Sheraton Suites Cypress Creek

555 N.W. 62nd Street . Fort Lauderdale . Florida 33309 . USA . Phone: (954) 772-5400



## Cold Canapés

- Tomato caprese canapes 5
- Asparagus with cream cheese wrapped in prociutto 6
- Prosciutto wrapped melon 6
- Boursin and pecans on rye rounds 5
- Cajun style bruschetta on flat bread 5
- Smoked salmon canape with dill cream cheese 6
- Blackened shrimp canape 5
- Bruchette of cherry tomato and pesto marinated mozzarella 5
- Blackened tuna and Waldorf salad on flat bread 6
- Bruschetta of artichoke, sun dried tomato & Chevre 5
- Scallop and calamari ceviche 5
- Miniature fruit kabobs 4

## Enhancements

### Chilled seafood bar

Selection of jumbo shrimp, oysters, littleneck clams and crab claws, served with cocktail sauce fresh dill aioli and lemon butter 18

### Salad Station

Classic caesar salad with shaved parmesan and sourdough croutons. Tossed field greens with a choice of two dressings. Marinated artichoke salad. Citrus fruit salad. 10

### Pasta Station

Penne pasta, linguine, carbonara, roasted garlic cream, spicy marinara, mild italian sausage, grilled chicken, asparagus, spinach, fresh mushrooms, bell peppers, fresh grated parmesan cheese 15

### Crostini Station

Petit slices of french bread topped with: brie cheese, red onion marmalade, sesame crusted ahi tuna with julienne veggie slaw, vine ripened tomato balsamic bruschetta 16

Minimum 50 pieces ~ per menu item A surcharge of 5 per person will apply to all Stations that are served with less than 25 people. All tables are served for a maximum of 1 1/2 hours All pricing is per person unless otherwise noted. A 22% service charge of the total food and beverage revenue (plus all applicable taxes, currently 6%) will be added.

# Sheraton Suites Cypress Creek

555 N.W. 62nd Street . Fort Lauderdale . Florida 33309 . USA . Phone: (954) 772-5400



## Hot Canapés

## Enhancements

Canapé service can either be passed or on station

- Conch fritters with remoulade 3.50
- Chicken or Beef satay with spicy Chicken or Beef satay with spicy peanut sauce 3
- Maryland crab cakes with remoulade 3.50
- Mini goat cheese flatbreads with caramelized onions 3
- Crispy pot stickers (chicken or pork) with sweet chili sauce 3
- Coconut chicken tenders 3
- Miniature chicken quesadilla 3
- Scallops wrapped with apple wood smoked bacon 3.50
- Miniature franks en croute 3
- Buffalo chicken wings with blue cheese dressing 3
- Oriental spring rolls with soy ginger dipping sauce 3
- Beef empanadas with tangy cilantro dipping sauce 3
- Pan seared duck brochettes with jalapeno peach glaze 3.50
- Swedish meatballs 3
- Mini beef brochettes with chimichurri sauce 3.50

### Crostini Station

Petit slices of french bread topped with: brie cheese, red onion marmalade, sesame crusted ahi tuna with julienne veggie slaw, vine ripened tomato balsamic bruschetta 16

### Pasta Station

Penne pasta, linguine, carbonara, roasted garlic cream, spicy marinara, mild italian sausage, grilled chicken, asparagus, spinach, fresh mushrooms, bell peppers, fresh grated parmesan cheese 15

### Fresh Vegetable Display

Farm fresh selection of crisp and grilled vegetables, spiced onion and chive dipping sauce or sun-dried tomato and roasted garlic dipping sauce 7

### Cypress Cheese Display

Selection of domestic and import cheeses displayed with fresh fruit garnish served with flat bread and water crackers 12

Minimum 50 pieces ~ per menu item A surcharge of 5 per person will apply to all Stations that are served with less than 25 people. All tables are served for a maximum of 1 1/2 hours All pricing is per person unless otherwise noted. A 22% service charge of the total food and beverage revenue (plus all applicable taxes, currently 6%) will be added.

# Sheraton Suites Cypress Creek

555 N.W. 62nd Street . Fort Lauderdale . Florida 33309 . USA . Phone: (954) 772-5400



## Action Stations

### Tuna ceviche martini bar

Sushi grade ahi tuna prepared two ways: ginger, scallion, thai basil and soy sesame glaze, cilantro, jalapeno, scallion, fresh citrus juices 22

### Pasta station

Penne pasta, linguine, carbonara, roasted garlic cream, spicy marinara, mild italian sausage, grilled chicken, asparagus, spinach, fresh mushrooms, bell peppers, fresh grated parmesan cheese 15

### Fajitas station

Marinated chicken and beef, warm flour and corn tortillas with toppings to include: grilled sweet onions, red and green bell peppers, grated cheddar cheese, guacamole, sour cream, pico de gallo 18

### Paella station

Grilled chicken, shrimp, scallops, mussels, fresh garden vegetables, spicy tomato sauce 20

### Crostini station

Petit slices of french bread topped with: brie cheese, red onion marmalade, sesame crusted ahi tuna with julienne veggie slaw, vine ripened tomato balsamic bruschetta 16

### Crab cake station

Jumbo lump crab, italian parsley, parmesan cheese, diced bell peppers; served with creole marmalade 15

### Mashed potato bar

Yukon gold, russet potatoes, roasted garlic mashed potatoes served with the following toppings: chives, sour cream, whipped butter, smoked bacon, cheddar cheese, sauteed mushrooms 10.50

Action Stations are an enhancement item and are not sold as a stand alone menu.

## Enhancements

### Roasted orange glazed turkey breast

fresh orange glaze, cranberry chutney, silver dollar rolls ~ serves 40 people 300

### Porcini rubbed tenderloin of beef

dry roasted porcini mushrooms, garlic, red pepper horseradish au jus and whole grain mustard ~ serves 40 people 475

### Pepper crusted strip loin of beef

melange of cracked peppercorn crust, fresh grated horseradish, merlot wine reduction, silver dollar rolls ~ serves 50 people 475

### Fresh iced raw

fresh shucked oysters, snow crab claws, chilled shrimp, served with tabasco, horseradish, cocktail sauce and pomegranate mignonette ~ minimum 50 people. market price

All Action Station Requires a labor fee of 175 A surcharge of 5 per person will apply to all tables that are served with less than 25 people. Attendance figures for enhancements must equal the guaranteed attendance figure All tables are served for a maximum of 1 1/2 hours. All pricing is per person unless otherwise noted. A 22% service charge of the total food and beverage revenue (plus all applicable taxes, currently 6%) will be added.

# Sheraton Suites Cypress Creek

555 N.W. 62nd Street . Fort Lauderdale . Florida 33309 . USA . Phone: (954) 772-5400



## Plated Dinner

- ~8oz New York strip with pinot noir reduction and gorgonzola butter 43
- Grilled salmon with capers and lemon 36
- Roasted chicken breast stuffed with spinach, ricotta cheese, goat cheese, roasted pepper and garlic 32
- Grilled marinated filet with wild mushroom 42
- Grilled chicken breast with sun dried tomato and boursin cream 34
- Jamaican jerked french breast of chicken with mango avocado salsa 34
- Grilled veal chop roasted with toasted cumin seeds and topped with a peach compote 49
- Blackened catfish topped with shrimp stuffing, citrus herb and tomato sauce 32
- Yucca encrusted mahi mahi with coconut cream sauce 38
- Grilled portobello napolean 28

## Enhancements

### Salads

- Caesar salad with hearts of romaine, bacon bits, herbed foccacia crisp 4
- Traditional greek salad with fresh peppers, bermuda onions, homemade croutons and creamy anchovy garlic dressing 4
- Sliced tomato with buffalo mozzarella and baby greens drizzled with aged balsamic syrup and basil oil 4
- Boston bibb wedge salad, radicchio, endive, crumbled bleu chesse, port soaked cherries and champagne herbed vinaigrette 4
- Mixed field greens with tear drop tomato, julienne carrots and roasted beets 3

### Soups

- Lobster bisque laced with brandy 6
- Cream of yukon gold potato with roasted leek and fresh dill 3
- Roasted corn and seafood chowder 4

### Desserts

- Individual key lime tart 6
- Flourless chocolate cake with raspberry and passion fruit sauce 5
- Tiramisu 6
- Chocolate mousse cake with fresh berries and raspberry coulis 5

A surcharge of 5 per person will apply to all tables that are served with less than 25 people. Attendance figures for enhancements must equal the guaranteed attendance figure All pricing is per person unless otherwise noted. A 22% service charge of the total food and beverage revenue (plus all applicable taxes, currently 6%) will be added.

# Sheraton Suites Cypress Creek

555 N.W. 62nd Street . Fort Lauderdale . Florida 33309 . USA . Phone: (954) 772-5400



## Dinner Table

## Enhancements

All dinner tables are served with chef's choice of fresh vegetables, starch and assorted desserts, freshly made rolls, sweet cream butter, freshly brewed Starbucks® coffee, decaffeinated coffee and TAZO® iced tea

### Southern dinner buffet

Seasonal young mixed field greens with english cucumbers, tomato, red onions, croutons and feta cheese, creamy ranch dressing and citrus vinaigrette

Caesar salad with foccacia croutons and shaved reggiano cheese

Fried or baked chicken

BBQ ribs or sliced sirloin of beef

Sliced smoked ham or sliced pork

Whipped yukon gold potatoes with an assortment of toppings to include: roasted garlic, butter, chives, cheddar cheese, crisp bacon and creamy gravy

Fresh seasonal vegetables 42

### BBQ style buffet

Baby spinach salad with fresh hardboiled egg, apple wood smoked bacon, sweet onion, garlic croutons and warm bacon vinaigrette

Memphis dry rub pork ribs

Bourbon braised beef brisket

Mesquite BBQ Chicken

Four cheese mac and cheese

Red beans and rice

Seasonal vegetables

Buttermilk biscuits or corn muffins 40

Traditional greek salad with fresh peppers, bermuda onion's, homemade croutons and anchovy garlic dressing 4

Sliced tomato with buffalo mozzarella and baby greens drizzled with aged balsamic syrup and basil oil 4

Boston bibb wedge salad, radicchio, endive, crumbled bleu cheese, port soaked cherries and champagne herb vinaigrette 4

### Soups

Lobster bisque laced with brandy 6

Cream of yukon gold potato with roasted leek and fresh dill 3

Roasted corn and seafood chowder 4

### Desserts

Individual key lime tart 6

Flourless chocolate cake with raspberry and passion fruit sauce 5

Tiramisu 6

Chocolate mousse cake with fresh berries and raspberry coulis 5

A surcharge of 5 per person will apply to all tables that are served with less than 25 people. Attendance figures for enhancements must equal the guaranteed attendance figure All tables are served for a maximum of 1 1/2 hours. All pricing is per person unless otherwise noted. A 22% service charge of the total food and beverage revenue (plus all applicable taxes, currently 6%) will be added.

# Sheraton Suites Cypress Creek

555 N.W. 62nd Street . Fort Lauderdale . Florida 33309 . USA . Phone: (954) 772-5400



## Cypress creek dinner buffet

Seasonal young mixed field greens with english cucumbers, tomato, red onions, croutons and feta cheese, creamy ranch dressing and citrus vinaigrette

Roasted prime rib of beef, carved to order with horseradish cream, natural juices and herb rolls

Roasted chicken roulade filled with herb polenta served with red pepper coulis

Penne pasta tossed with italian sausage, basil, tomato sauce, peas and garlic

Whipped yukon gold potatoes 44

## Italian style buffet

Antipasto salad with marinated olives, fresh mozzarella and grilled vegetables

Chicken carbonara, bacon, parmesan, cream sweet italian sausage and peppers

Homemade spaghetti and meatballs

Seasonal vegetables

Fresh foccacia 36

A surcharge of 5 per person will apply to all tables that are served with less than 25 people. Attendance figures for enhancements must equal the guaranteed attendance figure All tables are served for a maximum of 1 1/2 hours. All pricing is per person unless otherwise noted. A 22% service charge of the total food and beverage revenue (plus all applicable taxes, currently 6%) will be added.

# Sheraton Suites Cypress Creek

555 N.W. 62nd Street . Fort Lauderdale . Florida 33309 . USA . Phone: (954) 772-5400



## Host

## Enhancements

Price are per drink, reflecting the actual number of drinks consumed ice, glasses, stir, openers, picks, cocktail napkins, appropriate mixers and bar fruit are included in the above pricing

### Cypress Creek Favorite brands

Absolut®, Tanqueray®, Captain Morgan®, Johnnie Walker Red®, Cuervo 1800®, Jack Daniels®, Seagram's v.o®. 8

### Sheraton Familiar brands

Smirnoff®, Beafeater®, Bacardi Light®, Dewars®, Cuervo Gold®, Jim Beam®, Seagram's Seven® 7

### Imported beer

Corona® and Heineken® 6

### Domestic beer

Bud light®, Miller Light® and Budweiser® 5

### Non alcoholic beer

St Pauli® n.a. 5

### Other beverages

Familiar wine selection 6.50  
soft drinks 4  
still or sparkling water 4  
fruit juice 4

### Martini Bar

Assorted regular and flavored martinis with the traditional garnish ~ per drink 10

### Mojito Bar

Assorted regular and flavored mojitos with the traditional garnish ~ per drink 10

### Sake and Sakatini Bar

Assorted regular and flavored sakes and martinis with the traditional garnish ~ per drink 10

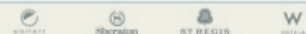
### Scotch Bar

Assorted regular and flavored scotch with traditional garnish ~ per drink 10

Champagne 8

Cordials 8

150 Bartender Fee per Bar All pricing is per person unless otherwise noted. A 22% service charge of the total food and beverage revenue (plus all applicable taxes, currently 6%) will be added.



# Sheraton Suites Cypress Creek

555 N.W. 62nd Street . Fort Lauderdale . Florida 33309 . USA . Phone: (954) 772-5400



## Cash

## Enhancements

All pricing are inclusive  
prices are per drink  
ice, glasses, stir sticks, openers, picks, cocktail napkins,  
appropriate mixers and bar fruit are included in the above  
pricing

### Cypress Creek Favorite brands

Absolut®, Tanqueray®, Captain Morgan®, Johnnie Walker  
Red®, Cuervo 1800®, Jack Daniels®, Seagram's v.o.® 9

### Sheraton Familiar brands

Smirnoff®, Beefeater®, Bacardi Light®, Dewars®, Cuervo  
Gold®, Jim Beam®, Seagram's Seven® 8

### Imported beer

Corona® and Heineken® 6

### Domestic beer

Bud Light®, Miller Light® and Budwiser® 5

### Non alcoholic beer

St Pauli N.A.® 5

### Other beverages

Familiar wine selection 7

soft drinks 5

still and sparkling water 5

fruit juice 5

### Martini Bar

Assorted regular and flavored martinis with the traditional  
garnish 10

### Mojito Bar

Assorted regular and flavored mojitos with the traditional  
garnish 10

### Sake and sakitini bar

Assorted regular and flavored sakes and martinis with the  
traditional garnish 10

### Scotch bar

Assorted regular and flavored scotch with traditional  
garnish 10

Champagne 8

Cordials 8

150 Bartender Fee per Bar All pricing is per person unless otherwise noted. A 22% service charge of the total food and beverage revenue (plus all applicable taxes, currently 6%) will be added.



# Sheraton Suites Cypress Creek

555 N.W. 62nd Street . Fort Lauderdale . Florida 33309 . USA . Phone: (954) 772-5400



## Specialty Bar

### Martini bar

assorted regular and flavored martinis with the traditional garnish ~ per drink 10

### Mojito bar

assorted regular and flavored mojitos with the traditional garnish ~ per drink 10

## Enhancements

### Scotch Bar

assorted regular and flavored scotch with traditional garnishes ~ per drink 10

### Sake and Sakitini Bar

assorted regular and flavored sakes and martinis with the traditional garnish ~ per drink 10

150 Bartender Fee per Bar All pricing is per person unless otherwise noted. A 22% service charge of the total food and beverage revenue (plus all applicable taxes, currently 6%) will be added.



# Sheraton Suites Cypress Creek

555 N.W. 62nd Street . Fort Lauderdale . Florida 33309 . USA . Phone: (954) 772-5400



## Bar Packages

## Enhancements

### Full Bar ~ Per Person Package

Favorite brands - one hour 18.00  
Each additional consecutive hour 9.00

Familiar brands - one hour 16.00  
Each additional consecutive hour 8.00

### Beer and Wine Bar ~ Per Person Package

Imported and Domestic beers, house red and white wines -  
one hour 15.00  
Each additional consecutive hour 7.50

Bartender Fee of \$150 per bartender

All food, beverage, room rental and audio visual prices are subject to change. Also subject to charge is the 22% service charge and 6% Florida Sales tax **GUARANTEES:** Please confirm your guarantee guest count three business days (72 hours) prior to your function. If a final count is not received, the expected number will be the guarantee. **CANCELLATION POLICY:**

In the event of cancellation less than 29 days and more than 3 days prior to the event, a charge of 75% of food, beverage and room rental revenue will be incurred. Cancellation within 72 hours prior to the event will result in payment due of 100% of food, beverage, room rental and audio visual revenues.

# Sheraton Suites Cypress Creek

555 N.W. 62nd Street . Fort Lauderdale . Florida 33309 . USA . Phone: (954) 772-5400



## Wine - White

### Sparkling Wines and Champagne

Charles de Fère®, Blanc de Blancs, Brut, "Cuvee Jean Louis" 42  
 Domaine Chandon®, Brut, "Classic" 45  
 Moët & Chandon®, Champagne, "White Star" 60

### Sweet White/Blush Wines

Sycamore Lane Cellars®, White Zinfandel 30

### Dry Light to Medium Intensity White Wines

Trinity Oaks®, Pinot Grigio 34

### Dry Medium to Full Intensity White Wines

Canyon Road®, Chardonnay 32  
 Century Cellars® by BV, Chardonnay 35  
 Sterling®, Chardonnay, "Vintner's Collection" 38

## Wine - Red

### Dry Light to Medium Intensity Red Wines

Mark West®, Pinot Noir 42  
 Canyon Road®, Merlot 32

Canyon Road®, Cabernet Sauvignon 32

Red Diamond® Winery, Merlot 44

### Dry Medium to Full Intensity Red Wine

14 Hands®, Cabernet Sauvignon 44

All pricing is per person unless otherwise noted. A 22% service charge of the total food and beverage revenue (plus all applicable taxes, currently 6%) will be added.

