

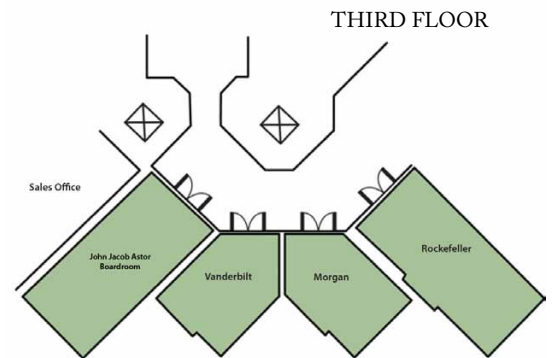
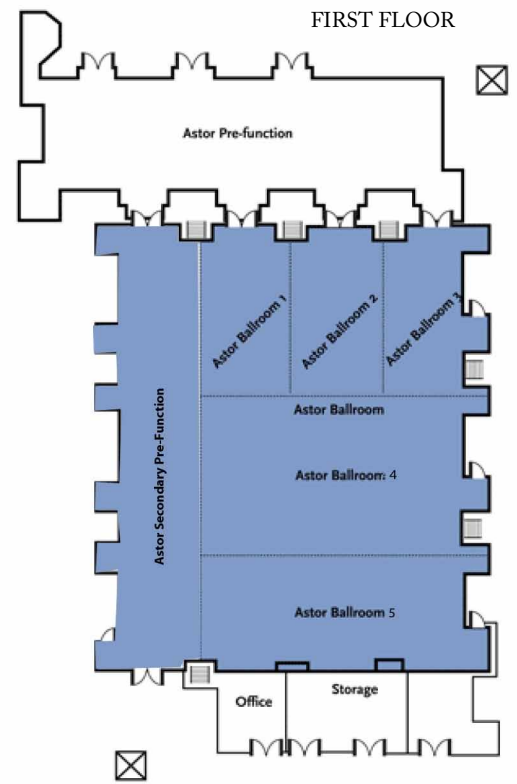


MEETING AND EVENT FACILITIES

Exquisitely appointed, we deliver unprecedented excellence in hospitality and elegance. Whether you are planning a social event for a large number of special guests or a meeting with a few select colleagues, you are invited to experience our unique splendor and majestic luxury. From creatively themed events, to flawlessly executed business meetings, to the finest galas and traditional or destination weddings requiring the finest address, our catering and conference service professionals will facilitate the creation of your unique event with precise execution.

The St. Regis Bal Harbour will offer approximately 11,200 square feet of indoor meeting and event space along with a wide variety of outdoor venues to accommodate varying sizes that take full advantage of the azure waters of the Atlantic Ocean at our doorstep. The hotel's two distinct indoor meeting areas allow for easy access and privacy. The 7,800 square-foot Astor ballroom can be adapted for meeting presentations and special events. The premier ballroom offers an operable partition to divide the room into five (5) sections, approximately three (3) equally divisible thirds and an end section that is divisible by approximately three (3) equal thirds. Thus, when all air walls are in place, it would offer five (5) distinct sections. The primary pre-function area offers 2,395 square feet and the secondary pre-function area is 1,600 square feet, totaling 3,995, which are ideal for receptions or meeting breaks. Additionally, the secondary pre-function square footage when utilized in conjunction with the entire ballroom expands to 7,800 square feet of total unobstructed event space. On the third floor four, (4) elegantly appointed boardrooms ranging in size from 250 square feet to 450 square feet round off the indoor event space options. Additionally, outdoor function space includes select patio pool and beach areas.

In conjunction with the notoriety of our "to be announced" world recognized chef, our culinary experience will complement the refinement and grandeur of this sophisticated event space. Supporting these high level services will be a state-of-the-art Business Center and an in-house audio visual provider.



	DIMENSIONS	TOTAL SQ FT	CEILING HEIGHT	THEATRE	CONFERENCE	CLASS	U-SHAPE	BANQUET	RECEPTION
FIRST FLOOR									
ASTOR BALLROOM	82' x 95'	7,800	15.0'	844	-	432	-	630	800
ASTOR BALLROOM I	20' x 36'	720	15.0'	88	24	45	20	60	84
ASTOR BALLROOM II	20' x 36'	720	15.0'	83	22	42	18	56	79
ASTOR BALLROOM III	20' x 36'	720	15.0'	72	20	36	16	50	68
ASTOR BALLROOM IV	64' x 34'	2,176	15.0'	233	62	120	53	170	210
ASTOR BALLROOM V	64' x 25'	1,600	15.0'	211	45	108	38	150	200
ASTOR BALLROOM I & II	40' x 36'	1,440	15.0'	166	47	84	40	120	158
ASTOR BALLROOM II & III	40' x 36'	1,440	15.0'	166	47	84	40	120	158
ASTOR BALLROOM I, II & III	60' x 36'	2,160	15.0'	244	67	126	58	180	232
ASTOR BALLROOM I, II, III & IV	60' x 70'	4,200	15.0'	477	129	246	110	350	453
ASTOR BALLROOM IV & V	60' x 59'	3,540	15.0'	444	106	230	91	330	421
ASTOR BALLROOM PRE-FUNCTION	82' x 24'	1,900	15.0'	255	-	-	-	190	242
ASTOR BALLROOM SECONDARY PRE-FUNCTION	95' x 20'	1,900	15.0'	277	-	-	-	130	168
ASTOR BALLROOM PRIMARY & SECONDARY PRE-FUNCTION	-	3,800	15.0'	-	-	-	-	328	421
THIRD FLOOR									
JOHN JACOB ASTOR BOARDROOM	29' x 12'	348	8.0'	-	12	-	-	-	-
VANDERBILT	21' x 12'	252	8.0'	27	8	12	7	20	26
MORGAN	21' x 12'	252	8.0'	27	8	12	7	20	26
ROCKEFELLER	29' x 12'	348	8.0'	-	12	-	-	-	-